



Leighton House
specialised nursing care



OUR HOME

Our home is located in the beautiful town of Epsom, Surrey, surrounded by picturesque views and a peaceful environment that complements our exceptional care services.

SPECIALISTS IN DEMENTIA CARE

Welcome to our nursing home, specialising in providing exceptional care for individuals with dementia. With over 30 years of experience in the care industry, we have been providing top-quality care services, and our dedication to ensuring the comfort and wellbeing of our residents remains as strong as ever.

We are proud to have the best staff, who are highly trained and skilled in providing the best possible care to our residents, focusing on their physical, emotional, and mental wellbeing.





NURSING AND DEMENTIA

At Leighton House, nursing and dementia care are at the forefront of our services, reflecting our dedication to providing exceptional care for those in need. Our team has undergone extensive training in order to provide the highest standard of care for residents suffering from dementia, encompassing all key aspects of their wellbeing.

Here at Leighton House, we care for residents with the following:

- **Alzheimer's**
- **Parkinsons**
- **Dementia**
- **COPD**
- **Motor Neurone Disease**
- **Multiple Sclerosis**
- **Muscular**
- **Dystrophy**
- **Diabetes**
- **Dual Diagnosis**

High Dependency Care

A comprehensive, holistic patient assessment is used at Leighton House for High Dependency. Through holistic assessment, our nurses are able to deliver person-centred care to patients. This is crucial to successful nursing care planning and maximising positive patient outcomes. Other key aspects we take into consideration for our high dependency care include:

- **Bipolar Disorder**
- **Anxiety**
- **Eating Disorder**
- **Personality Disorder**
- **Self Neglect**
- **Phobia**
- **Paranoia**

Residents with high dependency needs are supported on our Ground Floor under close supervision and will have regular monitoring via the GP and Nursing Team to ensure their needs are constantly being met.

OUR MISSION

At Leighton House Nursing Home, our mission is built upon these key principles:

- **Providing Exceptional Care:** We deliver personalised, compassionate care tailored to each resident's unique needs and preferences.
- **Fostering an Inclusive Environment:** We create a welcoming atmosphere that promotes dignity, independence, and personal growth for all residents.
- **Emphasizing Holistic Well-being:** Our approach addresses physical, emotional, and social well-being, ensuring residents feel valued and supported throughout their journey.
- **Continuous Improvement and Reinvestment:** We are committed to constant growth by reinvesting in our home, upgrading software, regularly refurbishing our facilities, and investing in staff development to provide the best services possible.
- **Advanced Software use:** We leverage cutting-edge technology to streamline care processes and enhance the resident experience.
- **24/7 Nursing and Top-tier Medical Professionals:** Our dedicated team of highly skilled nurses and an on-site GP are available around the clock to ensure residents receive the best possible care.
- **Transparent Communication:** We maintain open lines of communication with families, working collaboratively to enhance residents' quality of life.

By embracing these principles, Leighton House Nursing Home strives to create a comforting home where residents and their families can face the future with confidence and optimism.





ACTIVITIES

- Leighton House boasts a dynamic activity schedule that changes weekly, providing an ever-evolving range of engaging experiences for our residents.
- Our carefully curated activities programme is designed to cater to a wide range of interests and abilities, and our dedicated Activities Coordinator, Kim, works tirelessly with our care team to ensure that each activity is a resounding success.
- We believe that meaningful activities play a crucial role in promoting social interaction, emotional well-being, and overall quality of life for our residents. That's why we offer a variety of activities, including painting, colouring, jewellery making, and much more.
- Our goal is to inspire creativity and provide opportunities for residents to explore new hobbies and interests, all while creating lasting memories and forming new friendships.
- Our residents take pride in the activities we offer, and we're proud to have a dedicated Activities Coordinator who ensures that our programme is not only successful but also extraordinary. With a focus on individual preferences and abilities, our activities programme is tailored to meet the unique needs of each resident, promoting a sense of fulfillment and purpose.

GORMET FOOD

- Prepare to indulge your taste buds like never before at Leighton House! We believe that every meal should be a feast for the senses, and that's why we take great pride in our appetising and visually stunning dishes.
- Our skilled chefs prepare and cook all of our meals on-site using only the freshest, high-quality ingredients, ensuring that every bite is bursting with flavour and nutrition.
- We offer a diverse range of cuisines at Leighton House, including Chinese, Indian, and Mediterranean dishes. Our menu is carefully crafted to cater to the unique dietary requirements and preferences of our residents. For those who require additional nutrition, we add rich ingredients and higher calorific values to our dishes.
- We also provide larger portion sizes for those with healthy appetites and special diets for those with medical conditions like Diabetes, with reduced sugar and salt options available.
- We understand that every resident has different dietary needs and preferences, which is why we provide alternative diets for those who may have religious or personal restrictions.
- Our mission is to ensure that every resident enjoys delicious, nourishing meals that are tailored to their individual needs and tastes.
- At Leighton House, we believe that good food is the heart of a happy home, and our exceptional dining experience is a testament to that.





FEES

- We are committed to providing high-quality care and accommodation that is both affordable and accessible. Our fees are starting from £1,650 per week and are dependent on a comprehensive individual assessment, which takes into consideration each resident's unique needs and preferences.
- Our fees are all-inclusive, covering everything from accommodation in a spacious en-suite room to 24-hour care from our expert team, personalised care plans, daily meals prepared by our skilled chefs, access to a range of facilities and amenities, regular activities and events, and assistance with personal care, medication management, and other support services as required.

FUNDING

At Leighton House, we understand that the cost of care can be a concern, and we're committed to helping you navigate the various funding options available to you. Our team is here to provide guidance and support, whether you're self-funded or looking for assistance from your local authority.

We can provide you with information on the different funding options available, including:

- **Self-Funding:**

If you're able to pay for your care independently, we offer a range of payment options to suit your needs.

- **Local Authority Funding:**

If you're eligible, your local authority may be able to provide financial assistance for your care. Our team can provide you with guidance on how to apply for funding and the different options available to you.

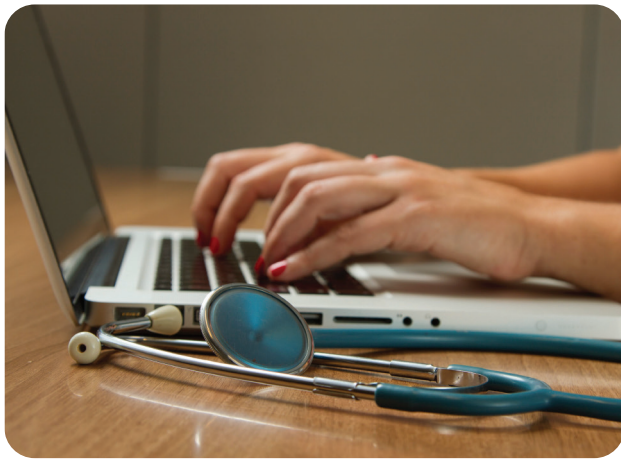
- **Other Funding Options:**

There may be other funding options available to you, including grants, benefits, and charitable organisations. Our team can provide you with information on the different options available and help you navigate the application process.

We understand that the funding process can be complex and overwhelming, which is why we're here to support you every step of the way.



PERSON CENTRED APPROACH



E-Care Software

Leighton House utilises the latest care delivery software to manage our care delivery within Leighton House. Our system is downloaded into our care home's tablet devices and allows our team to record, monitor and track how we provide care to your loved one.

All our records and care plans are created electronically with our in house team of qualified nurses and senior carers.



Family Portal App

Relatives have access to our smart phone app and will have access to information for their loved ones and receive push notifications for events have been documented such as Health professional updates (i.e., GP/Dentist visits and updates), Hospitalisations and outcomes, falls and injury details, activities and social care including photos, medical history and more.

The above is aimed to always keep you up to date on the go for important information. Our goal is to provide transparency in our care.





A Newly Refurbished Nursing Home


Leighton House has recently undergone a refurbishment program for 2022. This includes new flooring through communal areas and most bedrooms, painting and decorating, roofing and guttering, triple glazed aluminium windows fitted throughout the premises, new front door and fire exits and the now the latest IT software and hardware.

The Aims Care Group is proudly investing its profits back into the business to ensure our nursing home remains the best it can possibly be and always offering our residents five star care.



 01372 720 908

 www.leightonhouse.co

 Leighton House Private Nursing Home
Burgh Heath Road, Epsom, Surrey, KT17 4NB



Leighton House
specialised nursing care